



**JIANGSU SUNRISE WATERJET TECH. CO., LTD**

# Introduction



**Company Name:** Jiangsu Sunrise Waterjet Technology Co.,Ltd

**ADD:** 26 North Feiyao Road, Huaian City Jiangsu Province, China

**Contact Person:** Oprah Wang

**Tel:** +86-517-83717533-8013

**Cell:** 0086-18252333589(whatsapp)




**Fax:** +86-517-83717532








**Email:** sunrisecutting@hotmail.com

**Web:** www.xshcn.com

## Introduction of Waterjet Cutting machine

Description	Picture	Detail configuration	Remark
<p style="text-align: center;"><b>A:</b> <b>Waterjet</b> <b>Pump</b></p>		<p>1. Maximum pressure: 400Mpa(60000psi)</p>	 Intensifier of pump
		<p>2. Maximum flow rate: 3.8L/min</p>	
		<p>3. Oil pump power: 30kw</p>	
		<p>4. Power supply: 380v 50HZ 3P</p>	
		<p>5. Main parts: important from USA----HP Cylinder, Check valve assembly, HP seal kit and so on</p>	
<p style="text-align: center;"><b>B:</b> <b>Working</b> <b>Table</b></p>		<p>1. Cutting Scope: 3000mm*2000mm*150mm</p>	
		<p>2. Running Speed: 0-6000mm/min</p>	
		<p>3. Control Accuracy: +/- 0.02mm</p>	
		<p>4. Cutting Accuracy: +/- 0.1mm (500mm*500mm)</p>	

<p><b>C: Control System</b></p>		<ol style="list-style-type: none"> <li>1. High light 8LCD display.</li> <li>2. Adopt PLC control of SIEMENS, which have higher reliability, stronger anti-jamming, more simple maintenance</li> <li>3. Via COM、USB interface and PC or U disk for interface directly.</li> <li>4. Hand-hold machine tool controller is used for control the remove of axis X, Y, Z took to the machine side by operator.</li> </ol>	
<p><b>D: Abrasive Delivery System</b></p>		<ol style="list-style-type: none"> <li>1. The capacity can continually supply abrasive for 500 to 800 minutes cutting.</li> <li>2. With new abrasive cup, it can convenient adjust abrasive flow.</li> </ol>	

<p><b>E:</b></p> <p><b>Air</b></p> <p><b>Cooling</b></p> <p><b>System</b></p>		<p><b>Reduction Hydraulic oil Temperature</b></p>	
---	---	---	--

### Quotation

<p><b>Product Name</b></p>	<p><b>3 axis Waterjet cutting machine CUX400-SQ3020</b></p>
<p><b>Payment Terms</b></p>	<p><b>30% deposit</b></p>
	<p><b>70% paid before shipment</b></p>
<p><b>Guarantee period</b></p>	<p><b>One year (From the date of successful installation and training)</b></p>
<p><b>Delivery time</b></p>	<p><b>20 -30days from receive 30% deposit</b></p>
<p><b>Packages</b></p>	<p><b>Load in a 40 GP container with thin firm</b></p>
<p><b>Weight and Volume</b></p>	<p><b>4100KGS and 18CBM</b></p>
<p><b>Price</b></p>	<p><b>EXW (RMB) ¥260000.00</b></p>

## MACHINE CONFIGURATION

ITEM NO.	DESCRIPTION		STANDARD CONFIGURATION	
			BRAND	MODEL
1	UHP SYSTEM	UHP Intensifier	JE STYLE(USA)	CUX400
		UHP Reversing Sensor	CONTRINEX(Switzerland)	DW-AS-501-P20
2	LP SYSTEM	3 Phase AC Motor (30KW)	BEIDE(China)	
		Displacement Pump	HENG YUAN	
		Electro-hydraulic Reversing Valve	SUNNY	DSHG-04-2N2-T-D24-N1-50
		Eletromagnetic Relief Valve		S-BSG-06-2B3B-D24-N1-51
3	COOLING SYSTEM	Air cooling system	Sunrise(China)	
4	CNC MACHINE	Ballscrew	TBI(Taiwan)	
		Linear Motion Guide		
5	CNC SYSTEM	Control System	Washing(China)	710W
		Program Software	CNCKAD	
		Servo Motor	Yaskawa(Japan)	SGMGV-30ADC61, SGMGV-09ADC61

		Servo Drive		SGDV-200A01A, SGDV-7R6A01A
6	Electric	PLC	Sunrise(China)	
		Breaker	Schneider(France)	3P C65N C63
		Relay		RXMZLB1JD, 24V(DC)
		Fuse		RT18-32
		Power Supply		ABL1REM24062,24V
		AC Contactor		LC1-D80M7C,220V (AC)
		Temperature Controller		SW-C4

### THREE AXIS CNC CUTTING MACHINE

- ✧ Load and unload work piece from three directions. It solve the problem in overpass machine which can only load and unload the material from two side and limit the dimension of the material. It can put larger work piece in bed of cantilever machine which can larger than the bed of the machine. During the process of running , it will not have the problem which two boll screw is out-of-step , and it will not owing to the unbalanced pressure on synchro strop which will cause breakage of machine so that it can't insure the precision of cutting.
- ✧ Adopt high grade servo drive system, ball screw and guideway is also adopt international brand. X axis adopt the boll screw which diameter is 50mm, ensure the whole machine can transmission steady.
- ✧ Select high grade dustproof equipment.The life of dustproof equipment we select is more the three times than ordinary ones.
- ✧ Adopt the design that bed of the machine is separate with the cutting flat.

It will not effect by shack when cutting, increase the precision of cutting.

## CUTTING SPEED FOR REFERENCE

Item No.	Thickness (mm)	Cutting Through Speed For Reference mm/min(60# Garnet)						
		Mild metal	Stainless Steel	Marble	Ceramic (Normal)	Aluminum	Titanium	Glass
1	1.5	1000	950				4000	
2	2	850	800				2700	
3	3	700	650				1700	
4	5	550	500			1500	940	2000
5	8	320	300			900	530	1300
6	10	300	280	1800	2500	750	419	900
7	12	240	218	1500		650	338	800
8	15	160	150	1200		530	260	700
9	18	130	120	1000		440	210	650
10	20	110	100	900		390	180	580
11	25	90	80	700		300	145	

12	30	70	65	550		240	115	
13	35	60	55	450		200	95	
14	40	50	45	400		170	84	
15	50	40	35	300		135	64	
16	60	28	22	250		110	53	
17	80	20	17	180		80	38	
18	100	15	13	130		60	28	

**Parts provide with machine free:**

ITEM	PART NAME	UNIT	QTY	STANDARD
1	Special Tools for Intensifier	set	1	
2	Torque Wrench	pc	1	
3	Monkey Wrench	pc	2	12inch、15inch
4	Filter Canister Wrench	pc	1	
5	Metric hex Wrench	set	1	include 12mm hex wrench
6	Screwdriver	pc	1	



7	<b>Expansion Bolt</b>	set	1	<b>M16*150</b>
8	<b>Adjustment Mat Iron</b>	pc	15	
9	<b>Rubber hammer</b>	pc	1	
10	<b>Fuse</b>	pc	3	<b>2A(2pcs)、 6A (1pc)</b>
11	<b>Hoop</b>	pc	5	
12	<b>Glove</b>	pair	2	
13	<b>HP Seal Assembly</b>	set	2	
14	<b>Shaker</b>	pc	1	
15	<b>Nozzle</b>	pc	1	<b>6.35*1.02</b>
16	<b>Orifice</b>	pc	5	<b>0.33</b>
17	<b>Plastic tube</b>	pc	1	<b>L=1000mm</b>
18	<b>Water Retaining</b>	pc	1	
19	<b>Manual</b>	set	1	<b>instructions</b>
20	<b>Write Glue</b>	pc	1	
21	<b>Blue Glue</b>	pc	1	

## **SERVICE AND SUPPORT:**

Free phone support 24hrs a day (+86-18252333589)

Email support (E-mail:sunrise-cutting@hotmail.com, cuxy@xshcn.com)

## **INSTALLATION AND TRAINING:**

We can dispatch one engineer to users' company for installation and training; users need to pay for training fee, return tickets, accommodation and local transport and food. It need about 10 days for finishing.

## **APPLICATION FIELD**

At present, our machine has applied in aviation field, weapon field and so on such sophisticate military affairs field. At the same time, it also widely used in glass, machinery, stone-tech, AD, Auto such civil field, our machine also exported to America, Russia, Oceania, Africa, Mid-east, India and so on.



**SUNRISE IN RUSSIA**



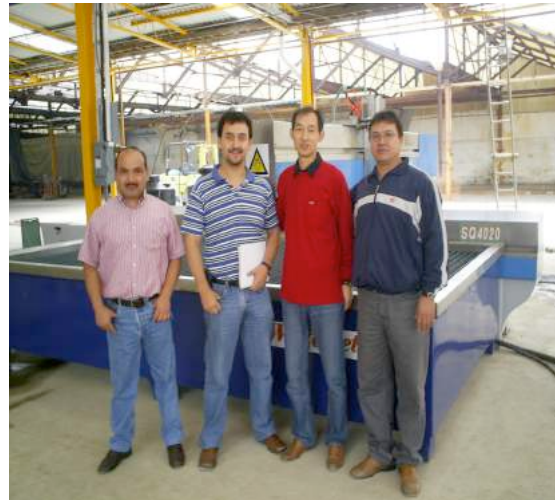
**SUNRISE IN INDIA**



**SUNRISE IN KUWAIT**



**SUNRISE IN AFRICA**



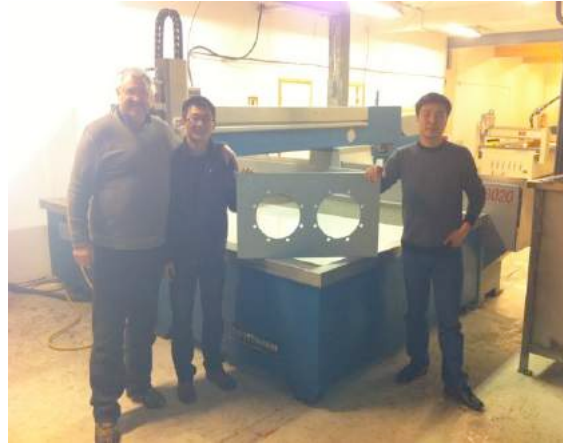
**SUNRISE IN MEXICO**



**SUNRISE IN BRAZIL**



SUNRISE IN POLAND

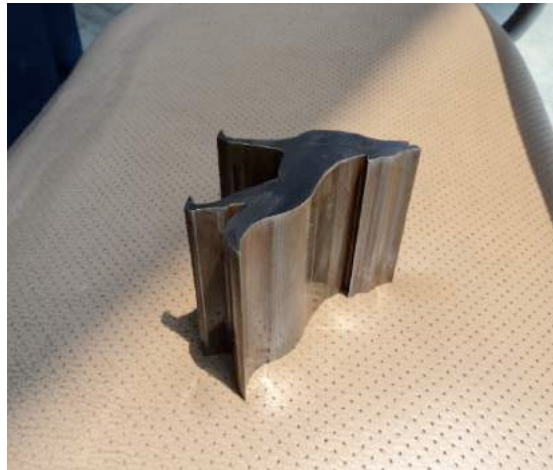


SUNRISE IN NORWAY



SUNRISE IN UK

**SAMPLE CUTTING BY WATERJET MACHINE**





**MARBLE**



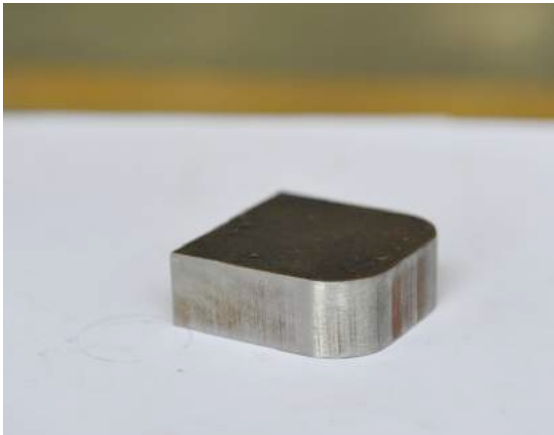
**METAL**



**GLASS**



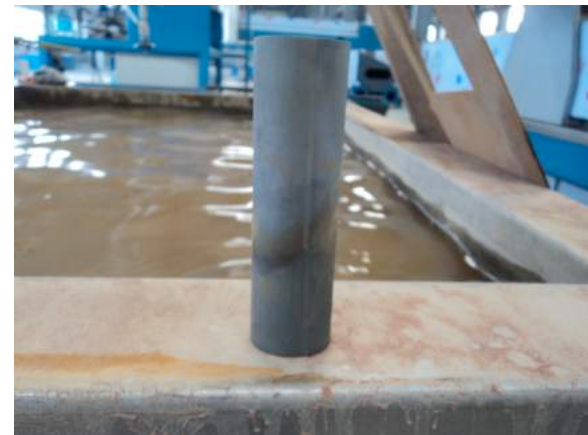
**METAL**



**PVC**



**METAL**



**METAL**

**MEDALLION**

**STEEL**



**PROFF GLASS**



**PLASTIC**



**20mmRION**





***Welcome To Visit Our Factory***  
***Our Confidence Comes From Your Trust!!!***